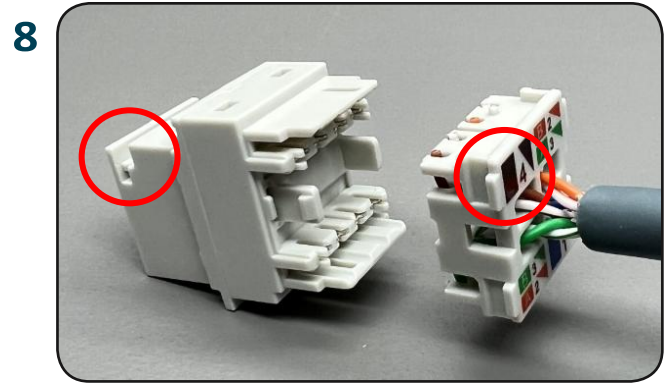
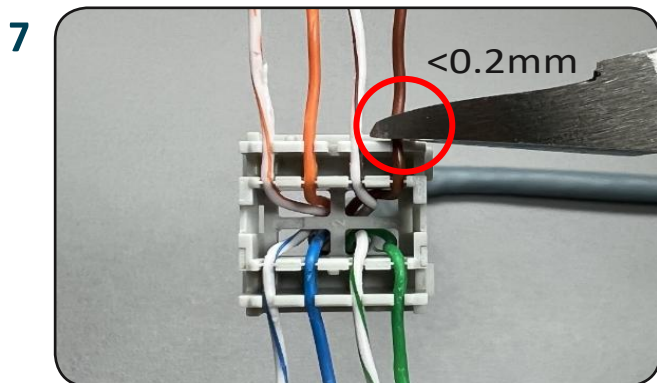
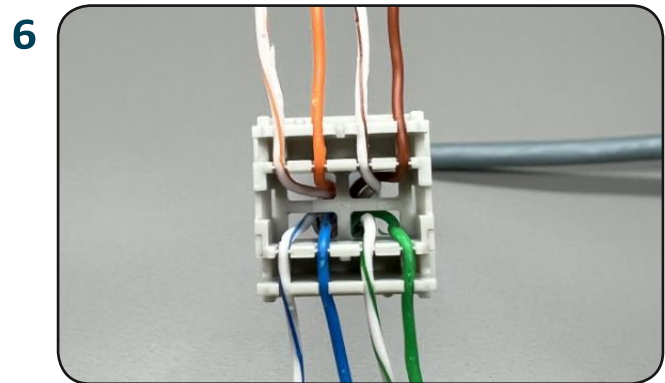
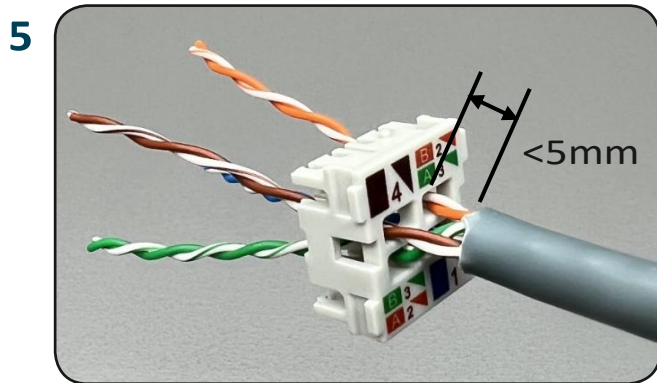
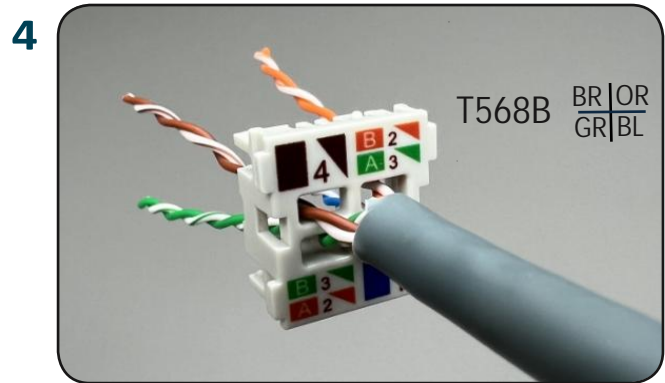
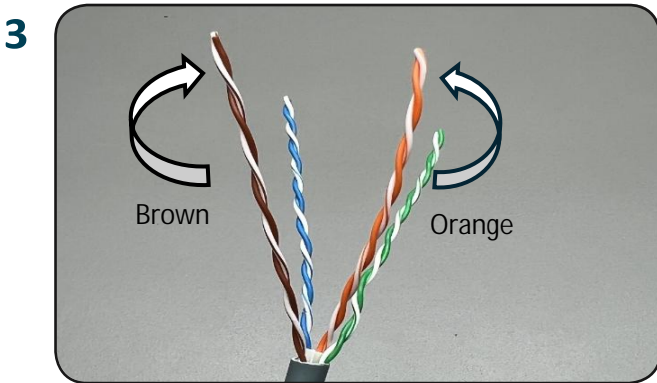
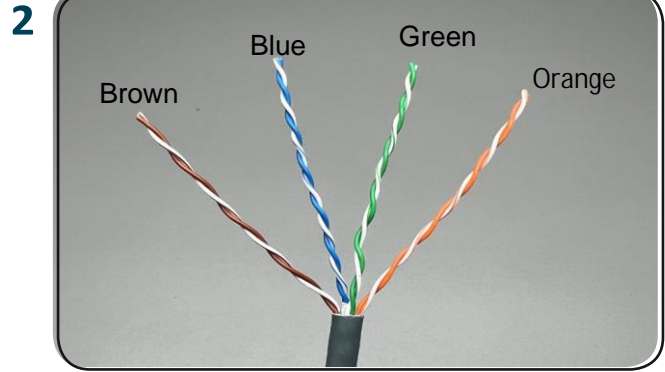
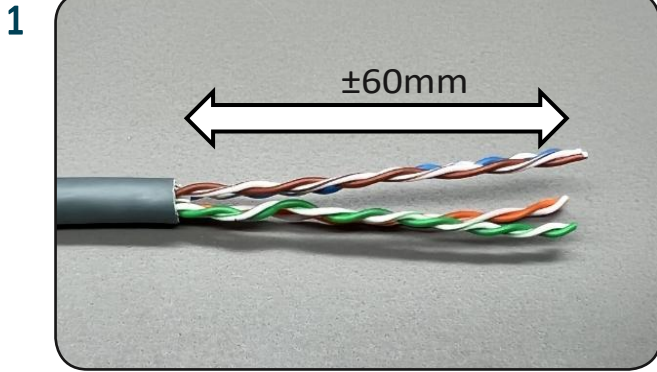
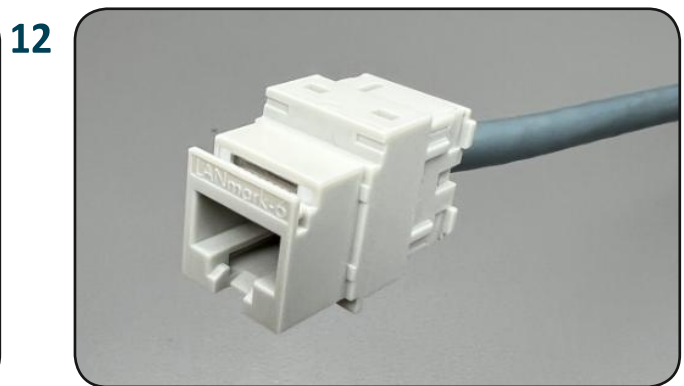
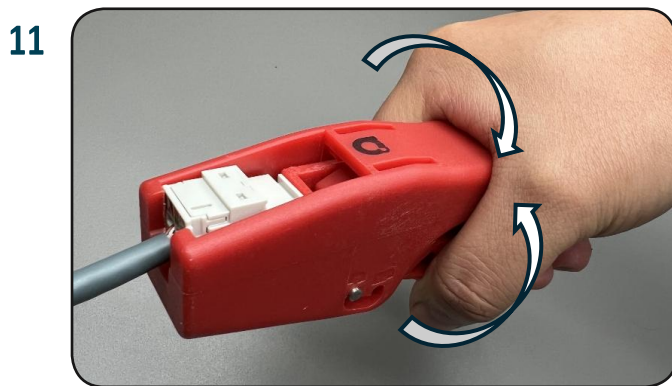
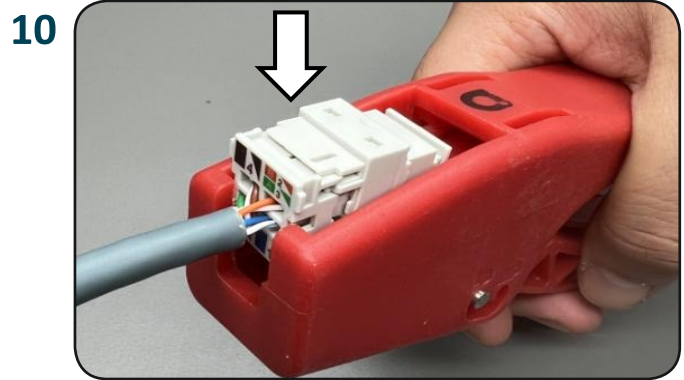
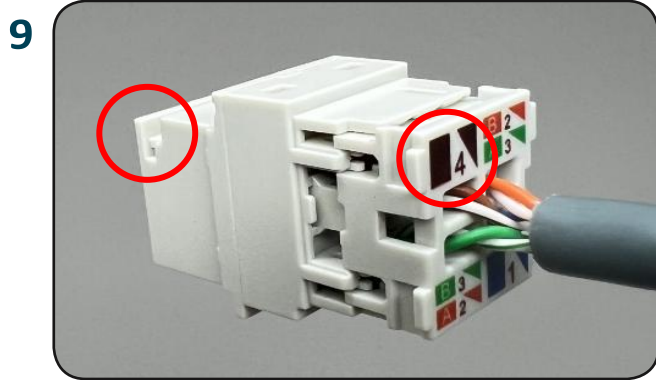


LANmark-6 EVO Snap-In Connector - Unscreened - NEW GENERATION



N420.660-03 • 20/01/2026 • important remark : 1. Never install communication cable wiring during a lightning storm; 2. Never install communication cable wiring in wet location unless the wiring is specifically designed for wet locations; 3. Never touch uninsulated communication cable wires or terminals unless the communication cable line has been disconnected at the network interface; 4. Use caution when installing or modifying communication cable lines.





N420.660-03 • 20/01/2026 • important remark : 1. Never install communication cable wiring during a lightning storm; 2. Never install communication cable wiring in wet location unless the wiring is specifically designed for wet locations; 3. Never touch uninsulated communication cable wires or terminals unless the communication cable line has been disconnected at the network interface; 4. Use caution when installing or modifying communication cable lines.