

Patch Guides, Blank Panels & Cable Management

Angled Panel Cover Black

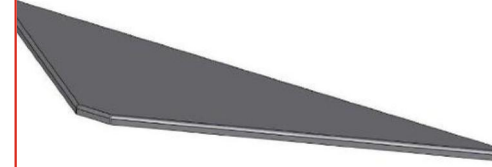
Nexans Ref.: N521.673

Country Ref.: 6916595

Cover Plate

DESCRIPTION

The Cover Plate is used to close the triangular gap formed at the top of a stack of LANmark or LANSense Angled Panels to prevent items falling behind the panels and to enhance the appearance of the finished installation.



STANDARDS

International ISO/IEC 11801

Patch Guides, Blank Panels & Cable Management

Angled Panel Cover Black

CHARACTERISTICS

Construction characteristics

Colour

Black

Dimensional characteristics

Heightunit

- U

SELLING AND DELIVERY INFORMATION

Supplied in Packs of 2